

CERTIFIED LAND CORNER RECORDATION

DESCRIPTION OF CORNER EVIDENCE FOUND, AND ORIGINAL RECORD (if known)

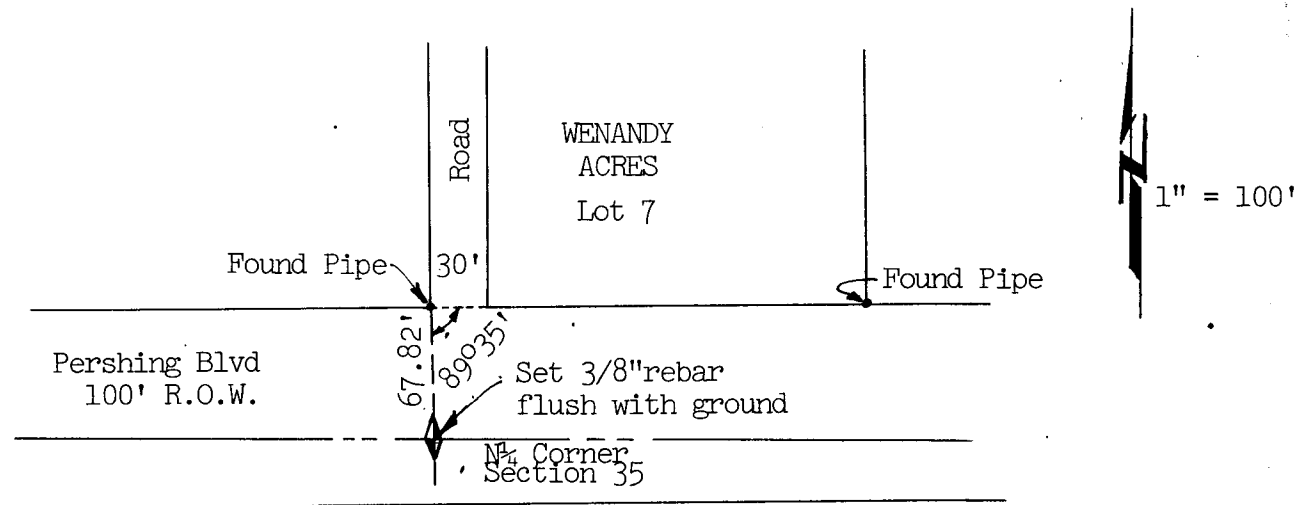
DESCRIPTION OF MONUMENT AND ACCESSORIES ESTABLISHED
TO PERPETUATE THE ORIGINAL LOCATION OF THIS CORNER:

LOCATION
Sec 26
+
Sec 35

Set 3/8" rebar flush with ground from ties platted on
Wenandy Acres.

Township 14 North Range 66 West
6th P.M.

SKETCH, WITH COURSE AND DISTANCE TO ADJACENT CORNER IF DETERMINED IN THIS SURVEY.
(May Sketch or Paste Reproduction on Reverse Side.)



I, S. D. Dawson certify that I have carefully performed or reviewed the work done on the diagrammed corner as reported on this recordation form and approve the same.

[Signature] Wyoming R.L.S. #555
Signature of Surveyor Registration No.

STATE OF WYOMING,
Office of Clerk and Recorder,
County of Laurel

This "corner record" was filed for record on the 16 day of August, 1974, was noted on the cross-index plat and is assigned page No. _____, in book No. _____.

John B. Huismann
County Official

Cross Index No. <u>19</u>	T. <u>14</u>	R. <u>66</u>	<u>6</u> Mer.
_____	T. _____	R. _____	Mer.
_____	T. _____	R. _____	Mer.
_____	T. _____	R. _____	Mer.
_____	T. _____	R. _____	Mer.
_____	T. _____	R. _____	Mer.
_____	T. _____	R. _____	Mer.

Photographed
 Indexed
 Posted
 Assessor

The State of Wyoming }
 County of Laramie } SS

This instrument was filed for record
 at 11 54 o'clock 4 M. on the
16 day of August
 A. D. 19 24 and duly recorded in
 Book on page

John B. Williams

County Clerk & Ex-Officio Register of Deeds
 of the County of Laramie, Wyoming